

TOWING & RECOVERY

ASSOCIATION OF WASHINGTON

2013

Membership Directory



madd[®]

Washington

PO Box 281, Cashmere, WA 98815

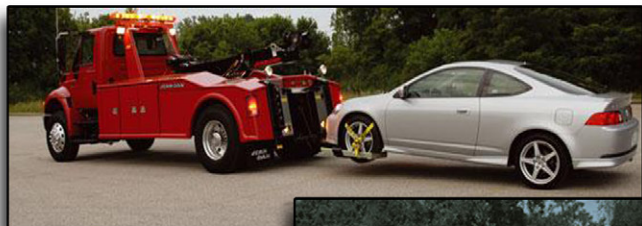
509.782.7170 Office / 509.782.7108 Fax

877.600.8729 (TRAW) Toll Free

www.towingandrecovery.net



INSURING THE TOWING INDUSTRY



WorldClass Insurance Services
Lic. 0D15602

Insurance for:

Tow Truck Operators • Body Shops • Salvage Yards
Used Car Lots • Service Stations • Auto Transporters
Auto Repair Shops

Steve Priddle or James Digini

2351 Sunset Blvd #170-560 • Rocklin, Ca 95765

(877) 789-1523 • Fax (877) 789-1530

contactus@worldclassins.com www.mytowagent.com

All Local, State & National Filings
We Insure all types of businesses

TOWING & RECOVERY

ASSOCIATION OF WASHINGTON

P.O. Box 281, Cashmere, WA 98815
509.782.7170 Office/509.782.7108 Fax
877.600.8729 (TRAW) Toll Free
www.towingandrecovery.net



TRAW was organized by towing, recovery and storage business owners as the authority to represent the interests of the tow truck industry in governmental and legal affairs.

TRAW promotes a profitable operating climate for tow operators working with the Washington State Patrol, Department of Transportation, Department of Licensing, the Legislature, and organizations directly or indirectly related to the tow business



For those of you that don't know me, my name is Jackie Currie. My husband, Malcolm and I purchased Columbia and Totem Towing located in SE Seattle from my parents in 1996 adding me to the list of 2nd generation owners. We share our home in Hobart, a rural community SE of Maple Valley with four horses a couple dogs, a grand dog and a feisty cat. We have a wonderful daughter, Dianna who learned the "towing ropes" when she was eight days old. Many of you have met Dianna as she supports TRAW helping at most association functions.

I have been very active supporting TRAW serving as co-chair of our NW Tow Expo and as the secretary/treasurer of our association. A few years back in a conversation with Mr. Paul Bressi, owner of Nisqually Towing Paul mentioned the power of a team and what we are able to accomplish when we work together. I strongly believe in our association and I couldn't get Paul's words off my mind. When I was working with our office to produce one of our Dispatch magazines I fashioned Paul's word into our association slogan.....

TRAW – The Power of a Team ~ bressi

Paul's words are so important today as we seem to be tested on a daily basis; produce more with less. Less employees, fewer dollars, increased taxes, new laws, cities making their own rules to fit their needs, virtually being asked to give more while working with less. I truly believe our strength is working together to make our voices heard on a city, county and state level.

With that said, I want to take this opportunity to sincerely thank you for the confidence and support that you are showing me as I step into the position of President of TRAW for 2013. I want to applaud each of you for electing some of the most brilliant people in our industry to serve as officers or your district chair or co-chair. I am humbled by the experience, expertise and wealth of knowledge these folks bring to the table as we strive to meet the never ending challenges that are placed upon our industry.

In closing I recall a conversation with another well respected member of our association Mr. Randy Houston, Randy's Towing, Okanagan/Wenatchee. Randy told me "that the Towing and Recovery Association of Washington was an opportunity, an opportunity to make a difference." Randy was then and continues to be absolutely right; together, we can make a difference..... "We can make it happen".

I urge each of you to get involved with TRAW. We have a strong membership always willing to help each other, reach out you'll be pleasantly surprised how great our team is.

I hope to meet each of you at a TRAW function or at your district meeting. If you're in my neighborhood, my door is always open or I'm a phone call away.

Thank you,
Jackie

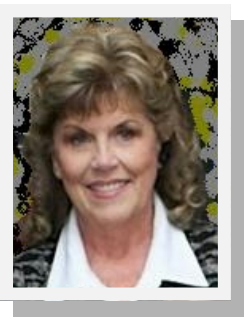
Together
"We can make it happen"

2
0
1
3

B
O
A
R
D

o
f

D
I
R
E
C
T
O
R
S

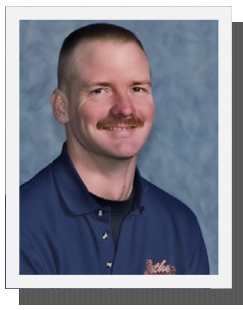


President

Jackie Currie
Columbia Towing
206.722.2535 / 800.303.2535

Vice President

Ron Jake
Bethel Towing
360.876.8292 Office

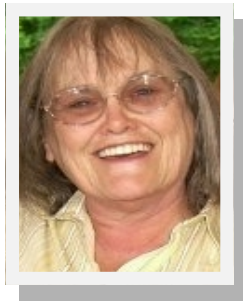


Treasurer

Mike Bartolotti
Lincoln Towing
(206) 364.2000

Member at Large

Bettie Simmons
AA Auto Salvage
509.465.4367





Past President 2011-2012

Dan Johnson

Johnson's Towing/Horton's Towing

360-733-4232

Past President 2008-2009-2010

Kurt Gillard

George Towing

509.785.5984 - 509.750.5984



Past President 2006-2007

Rolfe Johnson

Jim's Northgate Towing

206.364.1500

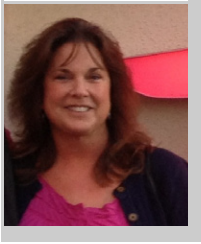
District 1

Wendy Dexter

Automotive Transport & Towing

253.266.2506





District 1 / Co Chair

Kris Zachery

Burns Towing

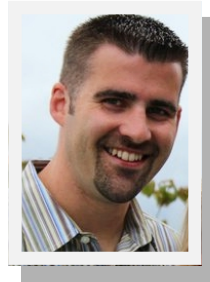
253-472-4496

District 2

Hiram Burke

Clark's Towing

425.392.6000



District 2 / Co-Chair

Al Runte

Ibsen Towing

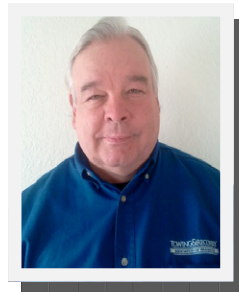
425-644-2575

District 3

Ken Schmidt

Ken's Auto Rescue

509.582.9414



District 4

Susie Groom

Superior Towing

509-251-3929



District 5

Ron Grant

Grants Towing

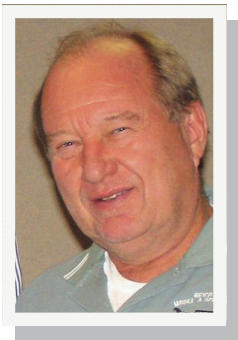
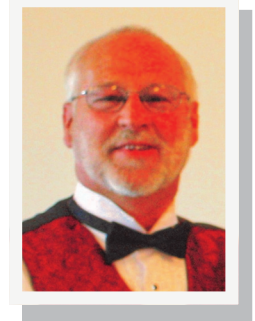
360-748-4118

District 6

Kurt Gillard

George Wa Towing

509-785-5984



District 7

Rolfe Johnson

Jim's Northgate Towing

206-364-1500

MADD's Mission

The mission of Mothers Against Drunk Driving (MADD) is to stop drunk driving, support the victims of this violent crime and prevent underage drinking. To date, MADD's work has saved 300,000 lives...and counting.

MADD Washington Contact Information

MADD Washington State

P.O. Box 46018

Seattle, WA 98146

206-734-3205

info@maddwashington.com

National 24-Hour Victim Support Helpline:

1-877-MADD-HELP



TOWING & RECOVERY

ASSOCIATION OF WASHINGTON



August 16th & 17th

Silver Reef Hotel, Casino & Spa

Ferndale, WA

1-866-383-0777

TRAW Office

509.782.7170 Fax 509.782.7108

toll free: 877.600.TRAW (8729)

www.towingandrecovery.net

Governmental & Legal Affairs

Paul Bressi, Nisqually Towing

360.491.1755

Bettie Simmons, AA Auto Salvage

509.455.4990

Education

Rich Steele, Dick's Towing & Road Service

206.242.9901

Bill Sullivan

253-732-2181

Tow Expo

Dan Johnson, Johnson Towing

360.733.4232

Jackie Currie, Columbia Towing

206.722.2535 - 800.303.2535

Legislative Issues. Office of Stu Halsan

Stu Halsan, Lobbyist

stuhalsan@localaccess.com

CONTRACTED STAFF

TRAW OFFICE

Office Administration - JEMA Services



Mike Walcker

Association Director

509. 782.7170

509. 670.6038, Cell

mike@towingandrecovery.net

Joanne Walcker

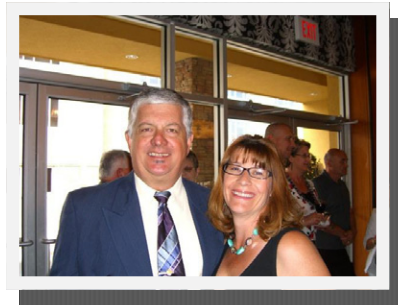
Administrative Assistant

509. 782.7170

509. 782.7108, Fax

509.679.6286, Cell

joanne@towingandrecovery.net



P. O. Box 281

4330 Eels road

Cashmere, WA 98815

509. 782.7170 phone

509. 782..08 Fax

.877.600.TRAW (8729)

www.towingandrecovery.org

Code of Ethics

Tow Operators Pledge of
Performance and Service

The

TOWING & RECOVERY ASSOCIATION OF WASHINGTON

adopted the Code of Ethics in 2008.

TOW OPERATORS

are professionals who have chosen to join
TRAW and abide by its strict Code of Ethics.

What does this mean to our customers?

It means that any **Tow Operator** with whom you work has voluntarily agreed to abide by a Code of Ethics, based on professionalism and protection of the public.

Tow Operators are subject to an Ethics & Professionalism Committee review if concerns are raised regarding the duties imposed by the Code of Ethics.

DUTIES TO THE PROFESSION

Uphold the highest of standards,
honor and a high degree of integrity.

DUTIES of ASSOCIATION BOARD MEMBERS

- Accept and respect the majority decisions of the Board, recognizing that the authority is vested in the Board, not in individual Directors.
- Do not pre-poll votes on matters outside of the meetings.
- Represent all members of the association. Know and uphold the By-Laws of the association.
- Aid those in the industry and show respect for the reputation of others representing the industry.
- Promote friendly and cooperative attitudes to all members of the association.
- Appropriately follow up on any Ethics & Professionalism concerns through the proper channels



TRAW

Events Calendar

May 3 & 4, 2013

Membership Meeting

Quality Inn & Conference Center

Ellensburg, WA

August 16 & 17, 2013

Northwest Tow Expo

Silver Reef Casino & Spa

Ferndale, WA

January 24 & 25, 2014

Winter Fest Celebration

Grandview on the Lake

Chelan, WA

TRAW - *“The Power of a Team”*

Campaign to Eliminate Drunk Driving

In 2006, in response to the over 13,000 people who were being killed each year in drunk driving crashes, MADD launched the national [Campaign to Eliminate Drunk Driving®](#) which focuses on three important steps we all can take today to stop drunk driving tomorrow:

[Support our heroes.](#) Support high-visibility law enforcement to catch drunk drivers and discourage others from driving drunk. MADD supports the use of impaired driving patrols and sobriety checkpoints. **Washington State is one of 17 states that does not allow for sobriety checkpoints under its laws.**

[Sober to start.](#) Require ignition interlock devices, or in-car breathalyzers, for all drunk drivers, to prove they are sober before their car will start. **Washington State is one of the few states that requires ignition interlocks for all drunk driving offenders.**

[Secure the future.](#) Support the development of technology to automatically determine whether or not a driver is above the legal limit of .08 and then stop a drunk driver from operating the vehicle.

The Campaign makes the idea of eliminating one of our countries primary safety threats a real possibility.



Why a Tow School?

- Attention:** All operators wanting hands-on experience with a focus on safety
- Attend:** 2-day light duty class that includes practice recovery
- Check Our Calendar:** Light duty classes are held throughout the year.
- Host:** Tow companies from around the state are our hosts.
- Register:** To register call the Association Office at 509-782-7170 or go online at www.towingandrecovery.net

- Valuable hands-on experience
- Practice recoveries
- Practice in safe environment
- Learn how to operate safely
- Learn how to operate equipment safely
- Increase credibility of company
- Increase credibility of industry
- Prevent damage to recovered vehicles
- Learn from the pros!



TRAW Education Department

2013 School Schedule:

ONE DAY SCHOOLS

March 20	Agri-Fix Towing	Moses Lake
April 16	NW Tow Expo	Ferndale

**Watch for additional schools to be posted at
www.towingandrecovery.net

LIGHT DUTY SCHOOLS

April 19 & 20	Dicks Towing	Marysville
May 17 & 18	Agri-Fix	Moses Lake
June 21 & 22	Airport Towing	Burien
July 19 & 20	Clark's Towing	Issaquah
October 25 & 26	Gig Harbor Fire Training	Gig Harbor

MEDIUM DUTY SCHOOL

July 19 & 20	Lincoln Towing	Seattle
--------------	----------------	---------

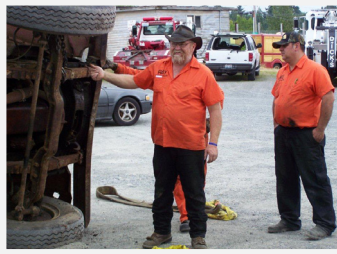
Member Price	\$200.00 Light Duty \$ 50.00 1-day class
Non-Member	\$350.00 Light Duty \$100.00 1-day



CURRICULUM

- Introduction
- Washington State Specific
- Appearance & Conduct
- Chains, Hooks & Attachments
- Driver Responsibilities
- Wire Rope
- Know Your Equipment
- Safe Towing Capacity
- Tools for the Job
- Inspection & Maintenance
- Chains
- Wheel Lift Procedures
- Cable
- Tow Sling Procedures
- Straps and Slings
- Dolly Procedures
- Rigging for Recovery
- Flatbed Loading Procedures
- Incident Management
- Towing Hook-ups and Techniques
- Hazardous Materials
- Recovery Resistance Factors
- Resistance and Recovery
- Snatch Blocks
- Brakes
- Airbag Safety
- Pull Outs

Registration forms available at
www.towingandrecovery.net



EDUCATION

Rich Steele

Dick's Towing & Road Service

2012 S. 146th Street

SeaTac, WA 98168

206-242-9901 phone

206-363-7376 Fax

Rich.steele@roadonewest.com

Bill Sullivan

253-732-2181

67chevellss@gmail.com

Instructors:

Ray Caveness

Randy's Towing

Wenatchee

Michael Bressi

Nisqually Towing

Olympia

Brian Borland

Nelson Truck

Seattle

Al Runte'

Ibsen Towing

Bellevue

Wendy Dexter

Automotive Transport

Lakewood

TRAW has a excellent education division whose goal is to provide law enforcement and the motoring public with efficient, effective towing and recovery service and most of all to make sure everyone goes home safely.

Remember

Good tow operators are not born, they are trained



TRAW has arranged with towPartners to provide complementary Gold Level Memberships in towPartners to all of its members. Whether you are a new **TRAW** member or are an existing member, you receive these benefits free from towPartners. The Gold Level Membership is usually a \$150 upgrade from the Basic Membership (another \$150 value) making it a value of \$300 annually, free through TRAW.

Your **TRAW** membership entitles you to receive many benefits and your towPartners membership provides your company with great savings programs from suppliers including Office Depot, Sprint Nextel, Aramark, Jerr-Dan, CARQUEST and many, many more. Your company also receives a free listing in the towSearch.com internet directory for fleets and consumers to locate you when they need towing or road service.

TRAW is working hard to serve the needs of the towing industry in Washington and the provision of towPartners memberships supports this effort. towPartners provides some of the best discounts available in the industry as well as many free tools for its members across the United States.

The Association Partnership between the Towing and Recovery Association of Washington and towPartners makes the industry a better one for towers across Washington.

Learn more at www.towpartners.com.



2013

***Member
Companies***

(In Alphabetical Order)

TOWING & RECOVERY
ASSOCIATION OF WASHINGTON

24 hour Towing and Recovery

Matthew Porter
1401 W Wine Country Rd #13
PO Box 671
Grandview, WA 98930
(509) 882-1006 Office
(509) 278-9817 Fax
(509) 305-7632 Cell
24hourtow@gmail.com

District 3

97 Auto Inc.

Jeff Spurgeon
PO Box 608
25899 Hwy 97
Brewster, WA 98812
(509) 689-2292 Office
(509) 733-1313 Cell
(509) 689-2388 Fax
auto97@nwi.net

District 6

AA Auto Salvage Inc.

Bettie Simmons
3504 S Inland Empire Way
Spokane, WA 99224
(509) 456-4367 Office
(509) 455-6381 Fax
Playkeno8@peoplepc.com

District 4

ABC Towing, Inc.

John and Gail Chase
710 S Dakota Street
Seattle, WA 98108
M/A: 10315 E Marginal Way S.
Tukwila, WA 98168
(206) 682-2869 Office
(206) 396-7343 Cell John
(206) 622-7496 Fax
gail.chase@abc4atow.com
www.abc4atow.com

District 2

About Time Towing LLC

Renee Huston
Jack Huston
1320 Arcadia Road
Shelton, WA 98584
(360) 358-8071 Office
(360) 490-0370 Cell
towtruckdribver@comcast.net

District 8

Ace Towing

Darrell Miller/Becky Miller
1917 South Washington Ave.
P.O. Box 146
Long Beach, WA 98631
(360) 642-3977 Office
(360) 642-8533 Fax
(360) 244-0688
acetowing1@centurytel.net

District 8

Ace City Towing

Melody Goode
3704 E Boone Ave
Spokane, WA 99202
(509) 325-4594 Office
(509) 991-4809 Cell
(509) 326-2030 Fax
melody@rousestow.com
District 4

Action Towing

Matt & Tracy McDougal
P.O. Box 1487
805 N. 7th Street
Yakima, WA 98901
(509) 248-6637 Office
(509) 452-4629 Fax
(509) 494-2126 Matt Cell
(509) 833-9306 Tracy Cell
matt.actiontowing@yahoo.com
District 3

Agri-Fix

Darin Hendrickson
6928 Road L NE
Moses Lake, WA 98837
(509) 765-1315 Office
(509) 750-8759 Cell
(509) 766-6345 Fax
agri-fix@gcpower.net
www.agri-fix.com
District 6

Airport Towing

Lynette Storer/Jared Storer
817 SW 149th Street
Burien, WA 98166
(206) 243-6252 Office
(206) 248-1099 Fax
storers1@comcast.net
jstorer@airporttow.com
www.airporttow.com
District 2

All City Autobody & Towing

Jan Kemp
518 Logan Street
Port Townsend, WA 98368
(360) 385-0634 Office
(360) 385-4744 Fax
eccjmk@hotmail.com
District 8

American Towing

Mike Marthaller Sr.
3328 Smith Avenue
Everett, WA 98201
(425) 355-7212 Office
(425) 257-3252 Fax
americantowing1@yahoo.com
District 7

AM-PM Towing, Inc.**Seattle Central Towing**

Michael D. Crane
PO Box 55044
Seattle, WA 98155
14315 Aurora Ave. N
Seattle, WA 98133
(206) 365-0330 Office
800-757-2115 toll free
(206) 571-7941 Cell
(206) 364-9309 Fax

craneampmtowing@aol.com

District 2

Angel Transport & Towing

Chuck Brewster
8023 79th Ave SE
Snohomish, WA 98291
(360) 568-0918 Office
(206) 769-8098 Cell
(360) 568-3466 Fax

66brewster@gmail.com

District 7

A.S.A.P. Towing

Aaron & Heidi Samora
PO Box 31753
4145 Bakerview Spur
Bellingham, WA 98228
(360) 734-6465 Office
(360) 715-1477 Fax
(360) 318-5417 Cell

heidi@bellinghamtowing.com

dispatch@asap-towing.com

District 7

Auto Medic of Seattle

Robert Kaiser
10401 NE 130th Street
Kirkland, WA 98034
(206) 373-1269 Office
(425) 307-1588 Fax
(206) 437-8010 Cell

automedicseattle@gmail.com

District 2

Automotive Transport & Towing

Randy and Wendy Dexter
12511 Pacific Hwy SW
Lakewood, WA 98499
(253) 584-1205 Office
(253) 584-1143 Fax
(253) 266-2506 Cell

wndyldy14@yahoo.com

District 1

Automotive Transport

Randy and Wendy Dexter
3215 S. Tacoma Way
Tacoma, WA 98409
(253) 473-6000 Office
(253) 473-3122 Fax

wndyldy14@yahoo.com

District 1

B-N-H Towing

James Warren
PO Box 1587
Yelm, WA 98597
(360) 458-2555 Office
(360) 458-7743 Fax
chrissy@bnhtowing.com

District 8

B & B Towing LLC

4308 E. Trent
Spokane, WA 99212
(509) 533-0111
(509) 533-0550
frontdesk@bbtow.com

District 4

B.J.'s Towing

Bill Edwards Jr.
PO Box 164
120 3rd Street
Sumas, WA 98295
(360) 988-4702 Office
(360) 201-2503 Cell
(360) 988-0033 Fax
bjsumasauto@frontier.com

District 7

Banker's Auto Rebuild

Christopher Keeling
405 S. 7th Street
Renton, WA 98057
(425) 255-3448 Office
(425) 227-5281 Fax
christopher@bankersautorebuild.com

District 2

Beeline Auto Center

Ben Ward/Steven Groulik
Mailing: P.O. Box 355
Physical: 1205 So. College Ave
College Place, WA 99324
(509) 525-8560 Office
(509) 522-3037 Fax
beeline@my180.net
grosteve@live.com

District 2

Bethel Towing

Ron Jake
6716 Bethel Rd.
Port Orchard, WA 98367
(360)876-8292 Office
(360) 895-4308 Fax
(360)340-2272
Ron@betheltowing.COM

District 8

Big D Towing

Darin Wade
PO Box 70336
1540 NW Leary Way
Seattle, WA 98127
(206) 362-9049 Office
(206) 905-0508 Fax
towing@bigdtowing.com

District 2

Big Red Towing and Auto Transport

Jim Corbett
127 Hallie Lane
PO Box 94
Cinebar, WA 98533
(360) 985-2799 Office
(360) 985-2799 Fax
bigredtowing@tds.net
District 5

Bilko Towing

Bill Koreski
2518 South 21st Avenue
Yakima, WA 98903
(509) 453-6001 Office
(509) 728-1805 Cell
(509) 453-8019 Fax
bilkotowing@gmail.com
District 3

Bill's Towing

Tom Lomis
1210 S Sprague
Tacoma, WA 98405
(253) 272-9393 Office
(253) 686-3003 Cell
(253) 572-1443 Fax
tlomis@aol.com
District

Budget Towing

John Lawrence
32156 Hwy 97
Tonasket, WA 98855
(509)486-4139 Office

(509)486 4139 Fax
(509)560-1056
District 6

Budget Towing

Doug Eldridge
2410 Old Hwy 99 South Road
Mount Vernon, WA 98273
(360) 424-4517 Office
(360) 661-4478 Cell
(360) 424-9193 Fax
budget.towing@verizon.net
District 7

Burien Towing

Lynette Storer/Jared Storer
823 SW 149th Street
Seattle, WA 98166
(206) 433-0660 Office
(206) 241-6353 Fax
Stoerers1@comcast.net
District 2

Burkhard Towing and Service, LLC

Robert and Rosey Burkhard
PO Box 244
803 E Woodin Ave.
Chelan, WA 98816
(509) 682-1600 Office
(509) 682-1602f ax
(509) 630-6648
burkhardtowing@yahoo.com
District 6

Burns Towing, Inc.

Kris Zachary
6454 McKinley Avenue
Tacoma, WA 98404
(253) 472-4496 Office
(253) 474-9695 Fax
(253) 380-8023 Cell
burnstowing@hotmail.com
District 1

Carl's Towing Service & Repair, Inc.

Mike DeSpain/Greg DeSpain
PO Box 1366
1137 Vandercook Way
Longview, WA 98632
(360) 423-4460 Office
(360) 425-7895 Fax
(360) 957-7034 Cell
Office@carlstowingandrepair.com
mike@carlstowingandrepair.com
www.carlstowingandrepair.com
District 5

Cascade Towing, Inc

Chuck Heitstuman
19425 SR 410 East
Bonney Lake, WA 98391
(253) 862-1210 Office
(253) 261-6669 Cell
(253) 862-7117 Fax
towtruckchuck@comcast.net
www.cascadetowing.com
District 1

Chico Towing

Stacey Tucker
130 Tweed Lane
Bremerton, WA 98312
(360) 479-7500 Office
(360) 479-4706 Fax
esfb@silverlink.net
District 8

Chico Towing II

Stacey Tucker
22173 Viking Way NW
Poulsbo, WA 98370
(360) 779-4666 Office
(360) 779-6515 Fax
esfb@silverlink.net
District 8

Clark's Towing

Kathy Clark
Hiram Burke
PO Box 2107
1780 NW Maple
Issaquah, WA 98027
(425) 392-6000 Office
(425) 765-8470 Cell
(425) 391-2649 Fax
clarktow@msn.com
www.clarktow.com
District 2

Clearwater Collision & Towing, LLC

Timothy W. Dean
4023 W Clearwater
Kennewick, WA 99336
(509) 783-4815 Office
(509) 783-8643 Fax
(509) 948-0312 Cell
Tim@clearwatercollision.com

District 3

CMA Towing

Dave Roberts
1901 Westport Rd.
Aberdeen, WA 98520
(360) 533-1158 Office
(360) 532-7400 Fax
(360) 589-8953 Cell
cmatowing1@yahoo.com

District **

Colfax Body Repair, LLC

Scott Pittman
514 So. Main Street
Colfax, WA 99111
(509) 397-3468 Office
(509) 553-9337 Cell
(509) 397-3469 Fax
colfaxbody@stjohncable.com

District 4

Collision Specialists Towing

Paul McDonald
6015 S. Adams Street
Tacoma, WA 98409
(253) 579-4083 Office
(253) 476-0574 Fax
plmcdonald@comcast.net
District 1

Columbia Towing

Jackie & Malcolm Currie
5907 M.L. King Way South
Seattle, WA 98118
(206) 722-2535 Office
(206) 963-9904 Cell
(206) 723-9847 Fax
(800) 303-2535 Toll Free
jackie@columbiatowing.com
www.columbiatowing.net

District 2

Crossroads Towing

Billy Stansfield
2457 Kamber Road A-3
Bellevue, WA 98007
(425) 746-4373 Office
(425) 649-8734 Fax
info@crossroadstowing.com
www.crossroadstowing.com

District 2

D & D Towing and Transport

Aaron Rothmeyer
PO Box 913
Centralia, WA 98531
(360)736-2338 Office
(360)736-2715 Fax
(360)880-5083 Cell
wreckeraaron@yahoo.com
District 5

D & M Motors & Towing

Kevin Johnson
205 N Main Street
Ellensburg, WA 98926
(509) 925-4151 Office
(509) 201-8563 Cell
(509) 925-4228 Fax
dandmtowing@fairpoint.net
www.dandmtowing.com
District 6

Day & Nite Towing

Rolfe Johnson
908 NW 49th
Seattle, WA 98107
(206) 633-5400 Office
(206) 633-1794 Fax
towingrolfe@gmail.com
District 2

Dean's Towing and Auto Service

Dean Tatro
PO Box 9
1709 Canyon Road
Ellensburg, WA 98926
(509) 925-4869 Office
(509) 925-6592 Fax
(509) 899-1134 Cell
deanstowing@gmail.com
district 6

Dick's Towing East

Chris Strain
110 Thurston Street
Wenatchee, WA 98801
(509) 663-1623 Office
(509) 663-4662 Fax
(509) 630-8131 Chris Strain
fifedispach@hotmail.com
District 6

Dick's Towing Inc.

Dick Peterson
Todd Peterson
3516 Paine Avenue
Everett, WA 98201
(425) 252-4004 Office
(425) 252-1753 Fax
danielle@dicks-towing.com
District 7

Dick's Towing Inc.

Dick Peterson
Todd Peterson
7404 44th Ave NE
Marysville, WA 98270
(360) 653-5845 Office
danielle@dicks-towing.com
District 7

Dick's Towing Inc.

Dick Peterson
Todd Peterson
8536 A Cedar Home Dr.
Stanwood, WA 98292
(360) 629-2722 Office
danielle@dicks-towing.com
District 7

Dick's Towing & Road Service Inc.

Rich Steele, Manager
P.O. Box 33458
Seattle, WA 98133
10140 W. Marginal Pl S
Tukwila, WA 98168
(206) 243-1647 Office
(206) 762-3006 Fax
(206) 793-0694 Cell
rich.steele@roadonewest.com
www.roadoneseattle.com
District 2

Divine's Towing

Tori Durham
203 West 3rd
Spokane, WA 99201
(509) 455-8622 Office
(509) 220-0315 Cell
(509) 455-4327 Fax
Divinecorp114@yahoo.com
District 4

Dude Where's My Car

Kenneth Hayes
1306 S. 18th Street
Yakima, WA 98901
(509) 249-5440 Office
towdude5205@yahoo.com

Eastside Towing Service, Inc.

Dave Handschin
12816 NE 21st Place
Bellevue, WA 98005
(425) 747-3191 Office
(425) 883-1350 Fax
daveh@howadjustment.com
District 2

Emerald Towing NW

Mike and Teresa Rollins
20618 Mountain Hwy E
Spanaway, WA 98387
(253) 846-1164 Office
(253) 875-4482 Fax
(253) 606-0783 Cell
emeraldtowing@comcast.net
District 1

Evans Auto Rebuild

Barry Evans
PO Box 220
9 Hidden Falls Drive
Republic, WA 99166
(509) 775-3388 Office
(509) 775-3151 Fax
evansauto@rcabletv.com
District 4

Evergreen State Towing North

Ken Meyers
PO Box 48285
Spokane, WA 99228
(509)-489-8697 Office
(509)489-8715 Fax
evergreentowing@aol.com
District 4

Evergreen State Towing West

Ken Meyers
PO Box 48285
Spokane, WA 99228
(509)-489-8697 Office
(509)489-8715 Fax
evergreentowing@aol.com
District 4

Evergreen State Towing East

Ken Meyers
P.O. Box 48285
Spokane, WA 99228
(509)-489-8697 Office
(509)489-8715 Fax
evergreentowing@aol.com
District 4

Evergreen State Towing

Ken Meyers
PO Box 48285
Spokane, WA 99228
(509)-489-8697 Office
(509)489-8715 Fax
evergreentowing@aol.com
District 4

Fitz Towing

Michael Myers
2416 E Street NE
Auburn, WA 98002
(253) 833-4433 Office
(253) 833-4173 Fax
fitztowing@nventure.com
District 2

Gary's Westside Towing

Gary Entwisle
5939 4th Ave S.
Seattle, WA 98108
(206) 762-8881 Office
(206) 381-9674 Fax
garyswestside@aol.com
District 2



Gene's Towing & Transportation, Inc.

Michael Myers
9212 S Tacoma Way
Lakewood WA 98499
(253) 588-1757 phone
(253) 589-9484 Fax
Mgekmyers@msn.com
District 1

Gene's Towing & Transportation, Inc.

Michael Myers
1120 East Main Avenue
Puyallup, WA 98372
(253) 845-0130 Office
(253) 845-7607 Fax
Mgekmyers@msn.com
District 1

Gene's Towing & Transportation, Inc.

Michael Myers
1022 S. 30th Street
Tacoma, WA 98409
(253) 272-8633 Office
(253) 682-0001 Fax
Mgekmyers@msn.com
District 1

Gene's Towing & Transportation, Inc.

Michael Myers
34515 16th Avenue S
Federal Way, WA 98003
(253) 941-9948 Office
(253) 847-8826 Fax
Mgekmyers@msn.com
District 1

George Washington Towing

Kurt & Donna Gillard
16866 Road 1 NW
Quincy, WA 98848
(509) 785-5984 Office
(509) 785-5985 Fax
(509) 750-5984 Cell (Kurt)
(509)760-5984 Cell (Donna)
kurt@smwireless.net
District 6

Grant's Towing & Automotive

Ron Grant
PO Box 215
276 W. Main Street
Chehalis, WA 98532
(360) 748-4118 Office
(360) 520-4118 Cell
(360) 748-8501 Fax
chehalisgrants@hotmail.com
District 5

Grant's Towing & Automotive**Locations:**

Ron Grant

*1025 S. Gold
Centralia, WA 98531
(360) 736-1869

*915 Koontz Road
Napavine, WA 98579
(360) 262-0654

*19706 Grand Mound Way
Rochester, WA 98579
(360) 273-8481

(360) 748-8501 Fax
chehalisgrants@hotmail.com
District 5

Halls Body Shop

Derek Bjork
992 E. Broadway
Moses Lake, WA 98837
(509)766-8123 Office
District 6

Helberg Towing

Lawrence Helberg
31791 Yakima Valley Hwy
Sunnyside, WA 98944
(509) 839-4228 Office
(509) 837-8928 Fax
(509) 250-6021 Cell
helbergtowing@hotmail.com
District 3

Hiway Towing and Truck Service

Doug Christen
1313 Gordon Road
Yakima, WA 98901
(509) 248-3831 Office
(509) 949-2936 Cell
(509) 248-1525 Fax
hiwaytowing@hotmail.com
District 3

Hooked Up

Jason Helberg
PO Box 631
901 E Street
Granger, WA 98932
(509) 949-3579 Office
(509) 829-9169 Fax
(509) 949-1283
hookeduptowing@hotmail.com
District 3

Horton's Towing

Dan Johnson
4056 Bakerview Valley Road
Bellingham, WA 98226
(360) 733-1230 Office
(360) 671-7464 Fax
(360) 815-1913 Cell
service@hortonstowinginc.com
dan@hortonstowinginc.com
District 7

Ibsen Bellevue

Al Runté
PO Box 421,
Easton, WA 98925
13226 SE 30th B-6
Bellevue, WA 98005
(425) 644-2575 Office
(425) 644-2634 Fax
(206) 510-5310 Cell
ibsenal@live.com
District 2

Ibsen Redmond

Al Runté
PO. Box 421
Easton, WA 98925
17725 NE 65th A 125
Redmond, WA 98052
(425) 644-2575 Office
(206) 510-5310 Cell
(425) 644-2634 Fax
ibsenal@live.com
District 2

J & B Towing LLC

Marc O'Neil
PO Box 252
116 Wilson Drive
Kalama, WA 98625
(360) 673-4030 Office
(360) 957-0064 Cell
(360) 673-4032 Fax
bchoggatt@kalama.com
District 5

Jack's Towing

Dave Wells
PO Box 40
535 Park Street
Woodland, WA 98674
(360) 225-8765 Office
(360) 798-2701 Cell
(360) 225-7342 Fax
Davesgarage_jackstowing@hotmail.com
District 5

Jackson's Service

Dennis & Gary Jackson
P.O. Box 30
4440 Hwy 155
Nespelem, WA 98155
(509) 634-4222 Office
(509) 634-4222 Fax
Jacksons_servie@hotmail.com
District 6

Jaeger's Towing

Dustin or Krissy Jaeger
2220 E Hillsboro St, Ste C
Pasco, WA 99301
(509) 380-0411 Office
(509) 545-4237 Fax
(509) 428-9223 Cell Dust
jaegerstowing@hotmail.com
District 3

Jaeger's Towing

Dustin or Krissy Jaeger
346 Sunset Hwy
Cashmere, WA 98815
(509) 782-2400 Office
(509) 782-2402 Fax
(509) 428-9223 Cell Dusty
jaegerstowing@hotmail.com
District 3

Jim's Auto Repair & Towing

James McCabe
PO Box 869
2911 E Brockdale
Shelton, WA 98584
(360) 426-7167 Office
(360) 490-6577 Cell
(360) 426-5925 Fax
jmc@hctc.com
mkatm@hctc.com
District 8

Jim's Towing

Rynnea Krauch
Nathen Simpson
1004 Commercial Ave
Anacortes, WA 98271
(360) 293-4333 Office
(360) 299-9642 Fax
dobblesinthedirt@aol.com
District 8

Jim's Northgate Towing Inc.

Rolfe Johnson
PO Box 25564
13730 32 N.E.
Seattle, WA 98165
(206) 364-1500 Office
(206) 365-1365 Fax
(206)854-3260 Cell
towingrolfe@gmail.com
District 2

Johnson's Towing

Dan Johnson
4058 Bakerview Valley Road
Bellingham, WA 98226
(360) 733-4232 Office
(360) 671-7464 Fax
service@johnsons.com
dan@johnsonstowinginc.com
District 7

Kellogg's Service & Towing, Inc.

David Stephens
North 15315 Newport Hwy
Mead, WA 99021
(509) 466-6442 Office
(509) 466-5148 Fax
District 4

Ken's Auto Rescue

Ken Schmidt
222 E Bruneau Ave #B
Kennewick, WA 99336
(509) 582-9414 Office
(509) 582-9680 Fax
(509) 531-8085
kensautorescue@frontier.com

District 3

Ken's Towing Inc.

Mike Bottem
PO Box 33458
Seattle, WA 98133
7730 185th Avenue NE
Redmond, WA 98052
(425) 883-1400 Office
(206) 510-8418 Cell
(425) 885-4945 Fax
michael.bottem@roadonewest.com
www.roadoneseattle.com

District 2

Ken's Towing Inc.

Mike Bottem
PO Box 33458
Seattle, WA 98133
1553 127th PI NE
Bellevue, WA 98005
(425) 455-1200 Office
(206) 510-0982 Cell
(425) 455-9418 Fax
michael.bottem@roadonewest.com
www.roadoneseattle.com

District 2

Kitsap Towing & Road Services

Ron and Deanie Madler
Box 2033
5901 NE Minder Road
Poulsbo, WA 98370
(360) 297-8600 Office
(360) 509-3333 Cell
(360) 297-8607 Fax
ronmadler@kitsaptowing.com

District 8

Lakewood Towing and Transport

Ron Eaton – Owner
Mike Johnson - Manager
9393 Lakeview Avenue SW
Lakewood, WA 98499
(253) 582-5080 Office
(253) 984-7073 Fax
mike@lakewoodtowing.com
www.lakewoodtowing.com

District 1

Leavenworth Auto Care & Towing

Tim Timpe
P.O. Box 251
12413 Chumstick Road
Leavenworth, WA 98826
(509)548-1444 Office
(509)548-3224 Fax
(509)669-8191 Cell

leavenworthauto@tumwater.net
tnttimpe@tumwater.net

District 6

Liberty Towing

Greg & Michelle Dreiling
2912 69th Avenue West
Tacoma, WA 98466
(253) 565-1300 Office
(253) 732-2183 Cell
(253) 565-2916 Fax
office@libertytowing.com
District 1

Lifeline Road Rescue LLC

Lee Ibsen/Monique Leulualalii
PO Box 5744
11622 SE 227th pl.
Kent, WA 98064
(253) 981-4664 Office
(253) 981-4286 Fax
(425) 289-8924 Cell Lee
Monique@lifelinetow.com
District 2

Lincoln Towing Enterprises, Inc.

Mike Bartolotti
PO Box 33458
12220 Aurora Ave. N
Seattle, WA 98133
(206) 364-2000 Office
(206) 510-8418 Cell
(206) 363-7376 Fax
mike.bartolotti@roadonewest.com
www.roadonewestseattle.com
District 2

Lincoln Towing Enterprises, Inc.

Mike Bartolotti
PO Box 33458
3919 Pasadena PI NE
Seattle, WA 98105
(206) 622-0415 Office
(206) 510-8418 Cell
(206) 547-1413 Fax
mike.bartolotti@roadonewest.com
www.roadonewestseattle.com
District 2

Mac Towing**Dan Wells / Desiree Ruby**

PO BOX 2887
8501 152nd Avenue NE
Redmond, WA 98052
(425) 822-2800 Office
(425) 881-2812 Fax
(206) 949-9897 Dan Cell
(206) 909-3255 Desiree Cell
desiree@mactowing.com
dan@mactowing.com
www.mactowing.com
District 2



Mack's Towing, Inc.

Steve Gay
1701 1st Street
Snohomish, WA 98290
(360) 568-3131 Office
(425) 330-8424 Cell
(360) 568-3134 Fax
District 7
mackstow@yahoo.com
District 7

Mary's Towing

Mary Brubaker
13303 Hwy 99
Everett, WA 98204
(425) 743-5800 Office
(425) 787-1865 Fax
Marys.towing@frontier.com
District 7

Maynard's Body Shop Inc

Cherry Barnum
PO Box 107
121 3rd Street
Raymond, WA 98577
(360) 942-5603 Office
(360) 942-3872 Fax
District 8

Mercer Island Towing

Kelly and John Starbuck
PO Box 144
7420 SE 24 #3
Mercer Island, WA 98040
(206) 236-0811 Office
(206) 236-0313 Fax
K9wrinkles@aol.com
knightsoninc@aol.com
District 2

Moses Lake Towing

Alan Mathyer
PO Box 729
12037 S Frontage Rd SE
Moses Lake, WA 98837
(509) 764-8111 Office
(509) 760-4444 Cell
(509) 765-6595 Fax
Tahoe9597@yahoo.com
District 6

Mount Vernon Towing, Inc.

Doug Faber
2218 Cedardale Road
Mount Vernon, WA 98274
(360) 336-3535 Office
(360) 661-0514 Cell
(360) 336-3497 Fax
dougfaber@mountvernantow.com
www.mountvernantow.com
District 7



NCW Towing

Chuck & Jeff Wagner
1514 B Walla Walla
Wenatchee, WA 98801
(509) 662-2080 Office
(509) 667-1262 Fax
ncwtowing@yahoo.com
District 6

Nisqually Towing

Paul Bressi
10246 Martin Way East
Olympia, WA 98516
(360) 491-1755 Office
(360) 491-4120 Fax
nisquallytowing@msn.com
District 1

Northwest Towing and Recovery

Craig Lohner
593 Prospect Ave
Port Townsend, WA 98368
(360) 379-8595 Office
(360) 385-5034 Fax
info@northwesttowingandrecover.com
sailor1@waypt.com
District 8

Orcas Auto Tech Inc.

Uzek Susol
PO Box 1385
35 Hope Lane
Eastsound, WA 98245
(360)376-8697 Office
(360)376-5424 Fax
(360)622-7045 Cell
susol@centurytel.net
district 7

Pete's Towing Service

Gary Petersen
Mailing: P.O. box 98783
Physical: 21841 Pacific Hwy. S
Des Moines, WA 98198
(206) 878-8400 Office
(206) 824-4485 Fax
gary@petersennorthwest.com
www.petersennorthwest.com
District 2

Pittman Towing

Andrew Pittman
1441 S. University Way
Ellensburg, WA 98926
(509) 962-8759 Office
(509) 925-6345 Fax
pitman1996@gmail.com
District 6

PRO-TOW

Keith Lewis
23933 SE 264th Street
Maple Valley, WA 98038
(253) 856-3312 Office
(206) 905-0905 Fax
keith@motorplex.com
www.motorplex.com
District 2

PRO-TOW

Keith Lewis
4054 Auburn Way N #4
Auburn WA 98002
(253) 856-3312 Office
(206) 730-7898 Cell
(206) 905-0905 Fax
keith@motorplex.com
www.motorplex.com
District 2

Quality Towing, Inc.

Mark & Shelly McMaster
12704 NE 124th St., #25
Kirkland, WA 98034
(425) 882-4999 Office
(425) 821-5053 Fax
qtowing@comcast.net
District 2

Quincy Towing

Paul Evens
401 F Street SW
Quincy, WA 98848
(509) 787-4127 Office
(509) 398-1301 Cell
(509) 787-6422 Fax
quincytowing@yahoo.com
District 6

R & R Star Towing

Dan & Mary Kelleher
20610 48th Ave. W
Lynwood, WA 98036
(425) 778-9557 Office
(425) 670-8290 Fax
(425) 754-1140 Cell
Kellehers05@hotmail.com
District 7

Rainbow Towing

Rolfe Johnson
6906 NE 182nd
Kenmore, WA 98028
(425) 487-1233 Office
(206) 854-3260 Cell
(425) 483-1163 Fax
towingrolfe@gmail.com
District 2

Randy's Auto Parts

Randy Houston
2050 Basin SE
Ephrata, WA 98823
(509) 754-3584 Office
(509) 754-4016 Fax
District 6

Randy's Auto Parts & Towing

Randy Houston
2135 Elmway
Okanogan, WA 98840
(509) 422-3170 Office
(509) 422-2322 Fax
randys@ncidata.com
District 6

Randy's Towing

Ray Caveness
353 Malaga-Alcoa Highway
Wenatchee, WA 98801
(509) 663-8471 Office
(509) 664-1844 Fax
ray.caveness@yahoo.com
District 6

Regan's Towing

Dennis Davidson
325 Washington Ave #408
Kent, WA 98032
(206) 242-3941 Office
(206) 592-8116
reganstowing@aol.com
District 2

Rick's Diagnostic & Repair Service, Inc.

Rick Slater
P.O. Box 2488
9919 SW 178th St
Vashon, WA 98070
(206) 463-9277 Office
(206) 463-6212 Fax
(206) 999-0826 Cell
ricksdiagnostic@aol.com
rslater463@aol.com
District 2

Road Samaritan Road Services

Kate and Art Midwood
728 S. Lander St.
Seattle, WA 98134
(206) 767-6184 Office
(206) 332-9593 Fax
(206) 383-7618 Cell
katem@roadsamaritan.com
District 2

*Live your life. Take chances.
Be crazy. Don't wait.
Because right now is the
oldest you've ever been and
the youngest you'll be
ever again.*

Ron May Towing & Recovery

Jim Zelmer / Dolly Holtzworth

Mailing: P.O. Box 2189

Physical 2406 39th Street

Everett, WA 98213

(425) 259-9264 Office

(425) 754-0193 Cell

(425) 259-0240 Fax

jim@ronmaytowing.com

www.ronmaytowing.com

District 7

Rouse's Valley Towing

Melody Goode

2621 N University

Spokane Valley, WA 99216

(509) 325-459509)

(509) 991-4809 Cell

(509) 326-2030 Fax

melody@rousestow.com

District 4

Rouse's Towing & Recovery

Rob Merrill

3704 E. Boone

Spokane, WA 99202

(509) 325-4594 Office

(509) 326-2030 Fax

melody@rousestow.com

District 4



MADD has created a powerful resource where parents can find research-proven strategies for preventing underage drinking at home and their community.

POWER of PARENTS

madd

Snoqualmie Valley Towing

David Dahl
43028 SE North Bend Way
North Bend, WA 98045
(425) 888-4884 Office
(425) 931-5351 Fax
tow4snojr@aol.com
District 2

South End Auto, Inc

Carl Magnuson
3400 E. Valley Road
Renton, WA 98057
(425) 251-8555 Office
(425) 533-0369 Fax
renton@southendauto.com
District 2

South Sound Towing

Dana Young
512 Devoe Street SE
Olympia, WA 98501
(360) 352-0958 Office
(360) 455-1390 towing line
(360) 352-6345 Fax
southsoundtowing@gmail.com
www.southsoundtowing.com
District 1

Spive Co Roadside Service

Chris Spivey
8115 180th St. SE
Snohomish, WA 98296
(360) 863-6806 Office
(425) 949-5047 Fax
spivecoroadsideservice@comcast.net
District 7

Starbuck's Towing

Kelly & John Starbuck
M/A: P.O. box 144
Mercer Island, WA 98040
Physical: 13234 NE 16th
Bellevue WA 98005
(425) 454-1800 Office
(206) 236-0313 Fax
K9wrinkles@aol.com
knightsoninc@aol.com
District 2

Stormin Towing & Transport, Inc.

Norman Stenberg
Mailing: P.O. Box 161
Physical 14449 Hwy 97A
Entiat, WA 98822
(509)754-7052 Office
(509)784-0191 Fax
(509) 670-5157 Cell
Stormin.towing@frontier.com
District 6

Superior Towing

J.P. Rajao
13551 S.E. 27th Place
Bellevue, WA 98005
(425) 454-4054 Office
(425) 457-7300 Fax
(425) 518-3724 Cell
jprajao.superiortowing@gmail.com
District 2

Tacoma Towing, LLC

Brian Paige
9118 39th Avenue. SW
Lakewood, WA 98499
(253) 582-6300 Office
(253) 589-8793 Fax
(253) 226-7647 Cell
tacomatowing@qwestoffice.net
District 1

TBT Towing, Inc.

Rick Weedrow
3460 1ST Ave South
Seattle, WA 98134
(206) 284-8128 Office
(206) 233-0671 Fax
tbt towingseattle@yahoo.com
District 2

Thompson Towing

Jerry and Dianna Thompson
M/A: P.O. Box 5520
Wenatchee, WA 98807
Physical: 434 B Rock Island Rd
East Wenatchee, WA 98802
(509) 886-0248 Office
(509) 886-2689 Fax
Thompsonstowing@nwi.net
District 6

Tim's 4 Corners Union 76 Inc.

Tim Arrants
Mailing: P.O. Box 16
Physical 630 Grand Coulee Ave.
Grand Coulee, WA 99133
(509) 633-0268 Office
(509) 633-2575 Fax
(509) 6312095 Cell
Quail@NWI.net
District 6

TLC Towing

Cory & Rochelle Wells
4545 S 11th Way
Ridgefield, WA 98642
(360) 887-1606 Office
(360) 887-9159 Fax
tlctowing@qwestoffice.net
District 5

Todd's Towing

Dennis Todd
PO Box 1270
46925 SE Middle Fork Road
North Bend, WA 98045
(425) 888-3414 Office
(425) 888-6414 Fax
toddstowing@yahoo.com
District 2

Totem Towing

Jackie & Malcolm Currie
5907 M.L. King Way South
Seattle, WA 98118
(206) 723-6595 Office
(206) 963-9904 Cell
(800) 303-2535 toll free
(206) 723-9847 Fax
jackie@columbiatowing.com
www.silveradoenterprises.com
District 2

Wahkiakum Tow, LLC

Laurie and Mike Moulot
269 Elochoman Valley Road
Cathlamet, WA 98612
(360)795-3700 Office
(360) 795-3701 Fax
(360) 795-6021 Cell
lepascoe@hotmail.com
District 5

Wally's Towing

Wally or Betty Carl
M/A: P.O. Box 323
Mountlake Terrace, WA 98043
Physical: 20510 60th Ave W.
Lynwood, WA 98037
(425) 672-0808 Office
(425) 508-8851 Cell
(425) 712-0960 Fax
wallycarl@yahoo.com
District 7

Weber's Towing

Jeff Weber
6410 W. Powerhouse Road
Yakima, WA 98908
(509) 966-4711 Office
Jeff@webers.net

**West Towing -
Anderson Collision**

Glen and Ellen Anderson
7208 N. Forker Road
Spokane, WA 99217
(509) 924-0194 Office
(509) 924-0083 Fax
Gandson2002@yahoo.com
District 4

**Western Towing and
Recovery LLC**

Dustin Jaeger
2220 E. Hillsboro ST, STE D
Pasco, WA 99301
(509) 545-5330 Office
(509) 545-4237 Fax
westerntowing12@gmail.com

District 3

**Whiteside Towing /
Whiteside Truck Parts**

Gene Whiteside
17728 SR 9 SE
Snohomish, WA 98296
(360) 668-5248 Office
(360) 668-6136 Fax
(425)471-4301 Cell
gene.1958@yahoo.com

District 7

Willette's Shell

Thomas Willette
901 East 1st Street
Cle Elum, WA 98922
(509) 674-HELP Office
(509) 674-9365 Cell Tom
(509) 674-9360 Cell Wayne
(509) 674-5299 Fax
willetteshell@inlandnet.com

District 6

Thank You



Zacklift International, Inc.
1102 E 1st Street
Cle Elum, WA 98922
T (509) 674-4426
email@zacklift.com - www.zacklift.com



**Sponsor
2013**



Northwest Regional
TOW EXPO
www.towingandrecovery.org

Always
believe
that
something
wonderful
is about
to happen.

quotebites.com

YOU Can Help Eliminate Drunk Driving!

Today, we can see a future without drunk driving, but we need your help to get there. Please join us in the fight!

Donate



MADD is a nonprofit organization that relies on donations to fulfill its mission. Financial donations can be sent to the MADD Washington office at:

PO Box 46018, Seattle, WA 98146.

Every dollar counts!

Volunteer

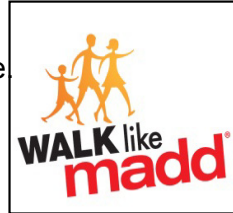
**MADD VOLUNTEER PROGRAM:
DRIVEN TO SAVE LIVES.**

We are more than just mothers. Anyone can apply to volunteer with MADD and we provide a variety of opportunities to fit various interests and schedules. Contact MADD Washington to learn more about volunteering.

YOU Can Help Eliminate Drunk Driving!

Join us at Walk/Run Like MADD

Walk/Run with your family or create a team and join us at our annual walk/Run in Seattle. Our annual walk is an opportunity for victims and survivors to memorialize a lost loved one, to support those who have been injured by drunk driving, and to take steps toward a future without drunk driving.



Event Date/Time: September 15, 2013
Event Location: Magnuson Park
Event Schedule: Registration 8:00am;
Opening Ceremony 9:00am; Walk 9:30am

Sponsorship and donor opportunities are available.

www.madd.org/wa

Refer a victim/survivor to MADD

MADD provides victims services and referrals to individuals who have been impacted by drunk and drugged driving. You can help a victim or survivor by sharing MADD Washington's contact information with them or referring them to our 24-hour helpline at **1-877-MADD-HELP.**



We Help
Survivors Survive.



Tie One On For Safety (TOOFS)



What is Tie One On For Safety?

Thanksgiving through New Year's Day is one of the most dangerous times of the year on U.S. roads and highways. That is why every holiday season, MADD asks motorists to place a MADD red ribbon or magnet on their vehicle as a pledge to drive safe, sober and buckled up, and remind other drivers to do the same. ***Tie One On For Safety*** is MADD's longest running and most visible public awareness project.

Contact MADD Washington for more information on how you can encourage safe and sober driving!



Washington State

PO Box 46018
Seattle, WA 98146
Phone: 206.734.3205
Email: wa.state@madd.org

<http://www.madd.org/local-offices/wa/>



2013

Member

Companies

(By City)

TOWING & RECOVERY
ASSOCIATION OF WASHINGTON

ABERDEEN

CMA Towing

Dave Roberts
360) 533-1158

ANACORTES

Jim's Towing

Rynnea Krauch
Nathan Simpson
(360) 293-4333

AUBURN

Fitz Towing

Michael Myers
(253) 833-4433

PRO-TOW

Keith Lewis
425) 432-8196

BELLEVUE

Crossroads Towing

Billy Stansfield
(425) 746-4373

**Eastside Towing Service,
Inc.**

Dave Handschin
(425) 747-3191

Ibsen Bellevue

Al Runté
(425) 644-2575

Ken's Towing Inc.

Mike Bottem
(425) 883-1400

Starbuck's Towing

Kelly & John Starbuck
(425) 454-1800

Superior Towing

J.P. Rajao
(425) 454-4054

BELLINGHAM

ASAP Towing

Aaron & Heidi Samora
(360) 734-6465

BELLINGHAM

Horton's Towing

Dan Johnson
(360) 733-1230

Johnson's Towing

Dan Johnson,
(360) 733-4232

BONNEY LAKE

Cascade Towing

Chuck Heitstuman
(253) 862-1210

BREMERTON

Bremerton Towing

John Nelson
(360) 373-5091

Chico Towing

Stacey Tucker
(360) 479-7500

BREWSTER

97 Auto, Inc

Jeff Spurgeon
(509) 689-2292

BURIEN

Airport Towing

Lynette Storer
(206) 243-6252

CASHMERE

Jaegers Towing

Dustin Jaeger
(509) 782-2400

CATHLAMET

Wahkiakum Tow, LLC

Laurie and Mike Moulot
(360) 795-3700

CINEBAR

Big Red Towing and Auto Transport

Jim Corbett
(360) 985-2799

CENTRALIA

D & D Towing and Transport

Aaron Rothmeyer
(360) 736-2338

**Grant's Towing &
Automotive**

Ron Grant
(360) 748-4118

CHEHALIS

**Grant's Towing &
Automotive**

Ron Grant
(360) 748-4118

CHELAN

**Burkhard Towing and
Service**

Robert & Rosie Burkhard
(509) 784-1600

CLE ELUM

Willette's Shell

Thomas Willette
(509) 674-2138

COLFAX

Colfax Body Repair, LLC

Scott Pittman
(509) 397-3468

DES MOINES

Pete's Towing Service

Gary W. Peterson
(206) 878-8400

EASTSOUND

Orcas Auto Tech, Inc.

Uzek Susol,
(360) 376-8697

EASTON

Cascade Towing

Robert & Debbie Hosmer
(509) 656-2400

EAST WENATCHEE

Dicks Towing East

Chris Strand
(509) 884-4040

Thompson Towing

Jerry and Dianna
Thompson
(509) 886-0248

ELLENSBURG

D&M Motors & Towing

Kevin Johnson
(509) 925-4151

Dean's Towing

Dean & Connie Tatro
(509) 955-4869

Pittman Towing

Andrew Pittman
(509) 962-8759

ENTIAT

Stormin Towing and Transport, Inc.

Norman Stenberg
(509) 754-7052

EPHRATA

Randy's Auto Parts

Randy Houston
(509) 754-3584

EVERETT

American Towing

Mark Marthaller
(425) 355-7212

Dick's Towing Inc.

Dick or Todd Peterson
(425) 252-4004

Mary's Towing

Mary Brubaker
(425) 743-5800

Ron May Towing & Recovery

Jim Zelmer / Dolly Holtzworth
(425) 259-9264

FEDERAL WAY

Gene's Towing

Michael Myers
(253) 941-9948

GRAHAM

Graham Towing

Bob Sorensen
(253) 262-2869

GRANDVIEW

24 Hour Towing and Recovery

Mathew Porter
(509) 882-1006

GRAND COULEE

Tim's 4 Corners Union 76 Inc.

Tim Arrants
(509) 633-0268

GRANGER

Hooked Up

Jason Helberg
(509) 949-3579

ISSAQUAH

Clark's Towing

Kathy Clark - Owner
Hiram Burke - Manager
(425) 392-6000

KALAMA

J & B Towing LLC

Marc O'Neil
(360) 673-4030

KALISPELL, MT

Bolster's Towing

Dennis Frownfelter
(406) 752-4528

KENMORE

Rainbow Towing

Rolfe Johnson
(425) 487-1233

KENNEWICK

Clearwater Collision & Towing, LLC

Timothy Dean
(509) 783-4815

Ken's Auto Rescue

Ken Schmidt
(509) 582-9414

KENT

Lifeline Road Rescue LLC

Lee Ibsen/Monique
Leulualalii

(253) 981-4664

Regan's Towing

Dennis Davidson

(206) 242-3941

Lakewood Towing, Inc.

Mike Johnson

(253) 582-5080

Tacoma Towing

Brian Paige

(253) 582-6300

LEAVENWORTH

KIRKLAND

Auto Medic of Seattle

Robert Kaiser

(206) 373-1269

Leavenworth Auto Care and Towing

Tim Timpe

(509) 548-1444

Quality Towing, Inc.

Mark & Shelly McMaster
(425) 882-4999

LONG BEACH

Ace Towing

Darrell and Becky Miller

(360) 642-3977

LAKESWOOD

Automotive Transport

Wendy & Randall Dexter

(253) 584-1205

Gene's Towing

Michael Myers

(253) 588-1757

LONGVIEW

Carl's Towing Service & Repair, Inc.

Mike DeSpain,

(360) 423-4460

LYNNWOOD

R & R Star Towing

Dan & Mary Kelleher

(425) 778-9557

Wally's Towing

Wally & Betty Carl

(425) 672-0808

MAPLE VALLEY

Maple Valley Towing

Jason Hall

(425) 433-0516

Pro-Tow

Keith Lewis

(425) 432-8196

MARYSVILLE

Dick's Towing

Dick or Todd Peterson

(360) 653-5845

MEAD

Kellogg's Service &

Towing, Inc.

David Stephens

(509) 466-6442

MERCER ISLAND

Mercer Island Towing

Kelly & John Starbuck

(206) 236-0811

MOSES LAKE

Agri-Fix

Darin Hendrickson,

(509) 765-1315

Halls Body Shop

Derek Bjork

(509) 766-8123

Moses Lake Towing

Alan Mathyer,

(509) 764-8111

MOUNT VERNON

Budget Towing

Doug Eldridge
(360) 424-4517

Mount Vernon Towing, Inc.

Doug Faber
(360) 336-3535

NESPELEM

Jackson's Service

Dennis & Gary Jackson
(509) 634-4222

NORTH BEND

Snoqualmie Valley Towing

David Dahl
(425) 888-4884

Todd's Towing

Dennis Todd
(425) 888-3414

OKANOGAN

Randy's Auto Parts & Towing

Randy Houston
(509) 422-3170

OLYMPIA

Nisqually Towing

Paul and Mike Bressi
(360) 491-1755

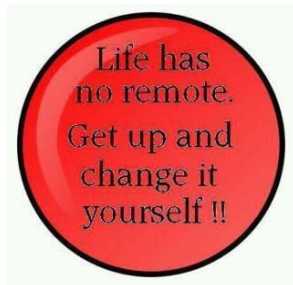
South Sound Towing

Dana Young
(360) 352-0958

OTHELLO

Oscar's Towing

Oscar Garza
(509) 488-6370



PASCO

Jaeger's Towing

Dustin and Krissy Jaeger
(509) 380-0411

Western Towing and Recovery

Dustin and Krissy Jaeger
(509) 380-0411

PORT ORCHARD

Bethel Towing

Ron Jake
(360) 876-8292

PORT TOWNSEND

All City Auto Body & Towing

Jan Kemp
(360) 385-0634

POULSBO

Chico Towing II

Stacey Tucker
(360) 779-4666

Kitsap Towing & Road Services

Ron Madler
(360) 297-8600

PUYALLUP

Gene's Towing

Michael Myers
(253) 845-0130

QUINCY

George Washington Towing

Kurt & Donna Gillard,
(509) 785-5984

Quincy Towing

Paul Evens
(509) 787-4127

RAYMOND

Maynard's Body Shop, Inc.

Cherry Barnum
(360) 942-5603

REDMOND

Ken's Towing Inc.

Mike Bottem
(425) 883-1400

Mac Towing

Dan Wells - Desiree Ruby
(425) 822-2800

Ibsen Redmond

Al Runté
(425) 644-2575

REPUBLIC

Evans Auto Rebuild

Barry Evans
(509) 775-3388

RENTON

Bankers Auto Rebuild

Justin Knowles
(425) 453-8001

South End Auto Inc.

Carl Magnuson
(425) 251-8555

RIDGEFIELD

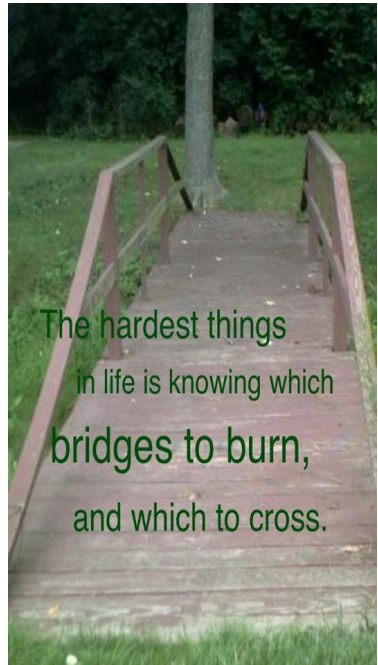
TLC Towing

Cory & Rochelle Wells,
(360) 887-1606

SEATAC

Dick's Towing & Road Service

Rich Steele
(206) 242-9901



The hardest things
in life is knowing which
bridges to burn,
and which to cross.

SEATTLE

ABC Towing, Inc.

John and Gail Chase,
(206) 682-2869

AM-PM Towing

Michael Crane
(206) 365-0330

Big D Towing

Darin Wade
(206) 362-9049

Burien Towing

Lynette Storer
(206) 433-0660

Columbia Towing

Jackie & Malcolm Currie
(206) 722-2535

Day & Nite Towing

Rolfe Johnson,
(206) 633-5400

Gary's Westside Towing

Gary Entwisle
(206) 762-8881

Jim's Northgate Towing Inc.

Rolfe Johnson,
(206) 364-1500

TBT Towing, Inc.

Rick Weedrow
(206) 284-8128

Lincoln Towing

Mike Bartolotti
(206) 364-2000

Road Samaritan Road Services

Kate and Art Midwood
(206) 767-6184

Totem Towing

Jackie & Malcolm Currie
206) 723-6595

SHELTON

About Time Towing

Jack and Renee Houston
(360) 358-8071

Jim's Automotive, Inc.

James McCabe
(360) 426-7167

SNOHOMISH

Angel Transport & Towing

Chuck Brewster
(360) 568-0918

Mack's Towing, Inc.

Steve Gay
(360) 568-3131

Spiveco Roadside Service

Chris Spivey
(360) 863-6806

Whiteside Towing

Whiteside Truck Parts

Gene Whiteside
(360) 668-8282

SPANAWAY

Emerald Towing

Mike and Teresa Rollins
(253) 846-1164

SPOKANE

AA Auto Salvage Inc

Bettie Simmons
(509) 456-4367

Ace City Towing

Melody Goode
(509) 325-4594

B & B Towing LLC

Kody Becker
(509) 533-0111

Divine's Towing

Joe Wiedmer
(509) 455-4321

Evergreen State Towing SUNNYSIDE

Ken Meyers
(509) 489-8697

Helberg Towing
Lawrence Helberg
(509) 839-4228

**Rouse's Towing &
Recovery**

Rob Merrill
(509) 325-4594

TACOMA

**Automotive Transport,
LLC**

Randy & Wendy Dexter
(253) 473-6000

**West Towing -
Anderson Collision**

Glen Anderson
(509) 924-2748

Bills Towing

Tom Loomis
(253) 272-9393

SPOKANE VALLEY

Rouse's Valley Towing

Melody Goode
(509) 325-4594

Burns Towing, Inc.

Kris Zachary
(253) 472-4496

STANWOOD

Dick's Towing

Dick or Todd Peterson
(360) 629-2722

**Collision Specialists
Towing**

Paul McDonald
(253) 549-4083

SUMAS

B.J.'s Towing

Bill Edwards, Jr.
(360) 988-4702

Gene's Towing

Michael Myers
(253) 272-8633

Liberty Towing

Greg & Michelle Dreiling
(253) 732-2183

TONASKET

Budget Towing

John Lawrence
(509) 486-4139

TUKWILA

**Dick's Towing and
Road Service**

Rich Steele
(206) 243-1647

TWISP

Port's Towing

Dallas & Jenny Darwood
(509) 997-2333

VASHION

**Rick's Diagnostic &
Repair Service, Inc.**

Rick Slater
(206) 463-9277

WENATCHEE

Dick's Towing

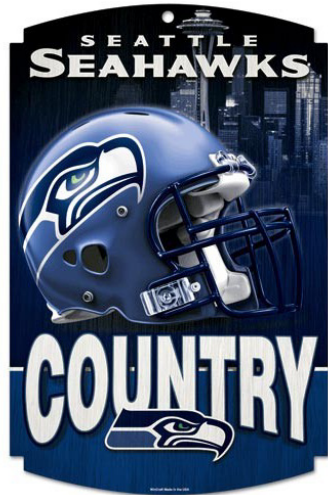
Chris Strain
(509) 663-1623

NCW Towing

Chuck & Jeff Wagner
(509) 662-8080

Randy's Towing

Ray Caveness
(509) 663-8471



WOODLAND

Jack's Towing

Dave Wells
(360) 225-9616

Weber's Towing

Jeff Weber
(509) 966-4710

Dude Wheres My Car

Kenneth Hayes
(509) 249-5440

Hiway Towing and Truck Service

Doug Christen
(509) 248-3831

YAKIMA

Action Towing

Matt McDougal
(509) 248-6637

Bilko Towing

Bill Koreski,
(509) 453-6001

Weber's Towing

Jeff Weber
(509) 966-4711

YELM

B-N-H Towing

James & Christina
Warren
(360)458-2555



Members with CLASS C Trucks

Action Towing

Yakima (509) 833-9306

Agri-Fix

Moses Lake (509) 765-1315

Airport Towing

Burien (206) 243-6252

All City Auto Body & Towing

Port Townsend (360) 385-0634

Bethel Towing

Port Orchard (360) 876-8292

Bill's Towing

Tacoma (253) 272-9393

Bolster's Towing

Kalispell, MT (406) 752-4528

Budget Towing

Mount Vernon (360) 424-4517

Burien Towing

Burien (206) 433-0660

Carl's Towing Service & Repair, Inc.

Longview (360) 423-4460

Chico Towing

Poulsbo (360) 479-7500

Clark's Towing

Issaquah (425) 392-6000

Colfax Body Repair, LLC

Colfax (509) 397-3468

D&M Motors & Towing

Ellensburg (509) 925-4151

Dick's Towing Inc,

Everett (425) 252-4004

Dick's Towing & Road Service

SeaTac (206) 242-9901

Emerald Towing

Spanaway (253) 846-1164

Evergreen State Towing

Spokane (509) 489-8697

Fitz Towing

Auburn (253) 833-4433

Gene's Towing

Lakewood (253) 588-1757

Gene's Towing

Puyallup (253)845-0130

Gene's Towing

Tacoma (253) 272-8633

George Washington Towing

Quincy (509) 785-5984

Grant's Towing & Automotive

Chehalis (360) 748-4118

Hiway Towing and Truck Service

Yakima 509) 248-3831

Jack's Towing

Woodland (360) 225-8765

Jim's Automotive, Inc.

Shelton (360) 426-7167

Johnson's Towing

Bellingham (360) 733.4232

Kellogg's Service and Towing

Spokane (509) 466-6442

Ken's Towing Inc.

Redmond (425) 883-1400

Kitsap Towing & Road Services

Poulsbo (360) 297-8600

Lakewood Towing

Lakewood (253) 582-5080

Mac Towing

Redmond (425) 822-2800

**Mount Vernon Towing,
Inc.**

Mt. Vernon (360) 336-3535

Nisqually Towing

Olympia (360) 491-1755

Northwest Towing

Tacoma (253) 922-8784

Pete's Towing Service

Des Moines (206) 878-8400

PRO-TOW

Maple Valley (425) 432-8196

Quality Towing, Inc.

Kirkland (425) 882-4999

**Randy's Auto Part's &
Towing**

Okanogan (509) 422-3170

Randy's Towing

Wenatchee (509) 663-8471

**Ron May Towing &
Recovery**

Everett (425) 259-9264

**Rouse's Towing &
Recovery**

Spokane (509) 325-4594

Rouse's Valley Towing

Spokane (509) 325-4594

TLC Towing

Ridgefield (360) 887-1606

Todd's Towing

North Bend (425) 888-3414

Whiteside Towing**Whiteside Truck Parts**

Snohomish (360) 668-8282

Willette's Shell

Cle Elum (509) 674-2138

Our slogan

" TRAW - The Power of a Team"

has never been more important.

When our members are shopping for trucks, equipment, jackets, gloves, business insurance, medical insurance, phone service, etc.,

we ask that they check first with one of the many vendor/suppliers who support our industry.

Together.... "We can Get It Done"



JERR-DAN

An Oshkosh Corporation Company

20063 84th Ave South Kent, WA. 98032

1-800-877-0338

nelsontruck.com

Brian Borland

Sales

Marshall Vail

Outside sales

Jim Taylor

Parts

Parts

Towing & Recovery vehicle sales

Service



Join the TRAW Group Fuel Program

Benefit from over 200,000 fueling locations across the US & Canada. Association will earn \$.01 per gallon quarterly rebate for all of members' fuel purchases

Contact Dave Hanson
dhanson@associatedpetroleum.com

(253) 606-3114

Associated Petroleum Products, Inc.

(800) 929-5243

www.associatedpetroleum.com

ARC: 1313





2013
Associate
Members

(In Alphabetical Order)



AAA Washington

Jeff Scholes
1745 114th Ave SE
Bellevue, WA 98804
(425) 646-2188 Office
jeffschole@aaawin.com
www.aaawa.com

Advanced Messaging & Dispatch

P.O. Box 1366
Longview, WA 98632
(360)425-6736 Office
(360)425-6188 Fax
(360)957-2623 Cell
scott@advancedmessaging.us

Associated Petroleum Products

Dave Hanson
Shannon Feichter
P.O. Box 1397
Tacoma, WA 98401
(253) 627-6179 Office
(253) 627-3637 Fax
sfeichter@associatedpetroleum.com

Choice Insurance

Dave Krause
1715 Market Street, Suite 100
Kirkland, WA 98033
(425) 739-6565 Office
(800) 289-8003 Toll Free
(425) 739-9955 Fax
davekrause@choiceinsurance.net

Doty & Giles

Ken Giles/Peter Jalbert
1213 N. Pines Road
Spokane, WA 99206
(509) 924-7755 Office
(509) 922-0610 Fax
keng@doty.com
petej@doty.com

**FTI Groups, Inc.
towXchange, Inc
towPartners**

Jeffery Godwin
P.O. Box 2349
Keller, TX 76244
(877) 401-2345 ext 205
(617-344-2659
jgodwin@ftigroups.com

Fleet Sales West

Jim Lofgren
2175 N. Pacific Hwy
Woodburn, OR 97071
(503) 982-5095 Office
(503) 981-2291 Fax
jlofgren@fleetsaleswest.com

**Gilchrist Chevrolet &
Tacoma Wrecker Sales**

Mitch Tramm
6004 S. Tacoma Way
Tacoma, WA 98409
(253)620-1900 Ext 314 Office
(253)620-1756 Fax
(206)606-2002 Cell
parts@tacomawrecker.com
www.tacomawrecker.com

Gulf Atlantic Supply

Glenn Davis
P.O. Box 738
Columbiana, AL 35051
(888) 662-1716 Office
(205) 669-2303 Fax
gulfatlanticsupply@gmail.com

Hwy Safety Supply

Dan West
706 East Hastings Rd.
Spokane, W(509) 467-6856 Office
(509) 467-8928 Fax
www.towtrucksupplies.com

**In The Ditch Towing
Products**

Kimberly Smith
3195 Industrial Way
Mountain Home, ID 83647
(208)587-7960 Office
(208) 580-1900 Fax
sales@intheditch.com
www.intheditch.com

Idaho Wrecker Sales

3195 Industrial Way
Mountain Home, ID 83647
(208) 587-2888 Office
(208) 587-7155 Fax
steve@idahowreckersales.com
www.wreckerbuilder.com

Integrated Claims Management

Richard Weeks
8830 Talon Ln NE
Lacey, WA 98516
(360) 786-1378 Office
(360) 956-3563 Fax
richard@icmoly.com

LegalShield

Darla Klovski
2011 East Eloika Lake Road
Deer Park, WA 99006
(509) 262-0209 office
(509) 951-7768 fax
darlaklovskippl@gmail.com

**Miller Industries
Towing Equipment, Inc.**

Randy Olson
8503 Hilltop Drive
Ooltewah TN 37363
(423) 238-4171 phone
(423) 619-1625 Cell
(423) 238-5371 Fax
rolson@millerind.com

Nation Safe Drivers Motor Club Inc.

Patrick Nahoum
800 Yamoto Road, Suite 100
Boca Raton, FL 33431
(561) 226-3600 ext, 272 Office
(561) 888-362-7850
pna-houm@nationsafedrivers.com

Nelson Truck Equipment

Brian Borland / Marshal Vail/
20063 84th Avenue South
Kent, WA 98032
(253) 395-3825 Office
(253) 872-6583 Fax
brian@nelsontruck.com
marshallv@nelsontruck.com
www.nelsontruck.com

Pasco Tire Factory

Ryan Weld
1324 N. 4th Ave
Pasco, WA 99301
(509) 547-1724 Office
(509) 547-0734 Fax
pascotirefactory@yahoo.com

Pro Answering Service

Janet Train/Andrew Bell
5013 Pacific Hwy E. #17
Fife, WA 98424

(253) 922-7440 Phone

(253) 922-8329 Fax

jantrain@proansweringsservice.com

Santiam Enterprises

Mike Wagner

PO Box 400

611 Main Street

Lyons, OR 97358

(503) 859-2793 Office

(503) 859-2663 Fax

mike@santiamenterpises.com

Tacoma Wrecker Sales

Mitch Tramm

6030 Tacoma Way

Tacoma, WA 98409

855-770-1700 Office

(253) 620-1911 Fax

sales@tacomawrecker.com

www.tacomawrecker.com

Tow Signs.com

Ray Payne

32430N.E. 120th St

Duvall, WA 98019

(425) 788-6717 Office

(425) 788-2919 Fax

towsigns50@aol.com

www.towsigns.com

Western Peterbilt

Brian Krumland

1435 E. Hillsboro

Pasco, WA 99301

(888) 330-7383 toll free

(509) 545-3700 Office

(509) 545-9163 Fax

bkrumland@westernpeterbilt.com

www.westernpeterbilt.com

Western Tire and Chain

Joe Rheume

P.O. Box 3274

Everett, WA 98213

(888) 838-2999 office/(425) 339-1362

westerntirechain@verizon.net

www.westerntirechain.com

**World Class Insurance
Services**

Steve Priddle or James Digini

2351 Sunset Blvd. #170-560

Rocklin, CA 95765

(877) 789-1523) Office

(877) 789-1530 Fax

steve@worldclassins.com

www.worldclassins.com

Xilyxis Tow Administrators

Bobby & Bertha Bonds

PO Box 118

Redmond, WA 98073

(425) 894-3269 Office

(425) 836-2493 Fax

support@towadmin.com

www.towadmin.com

Zacklift

Susan Zackovich

1102 East 1st Street

Cle Elum, WA 98922

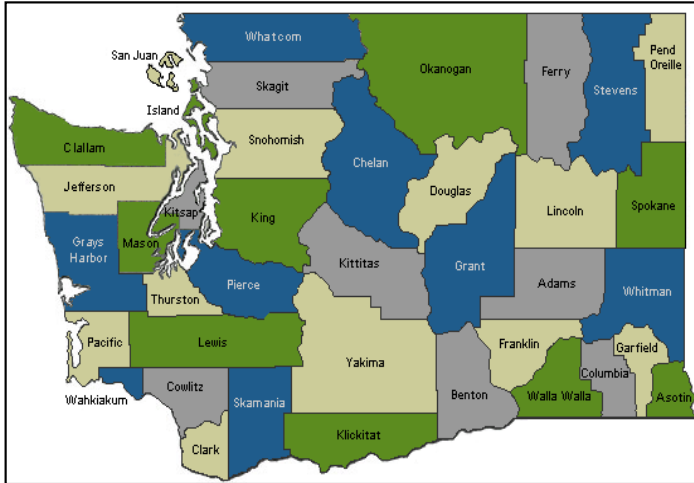
(509) 674-4426 Office

(509) 674-5267 Fax

email@zacklift.com

Www.zacklift.com

Washington State County Map



Washington State Patrol District Map



Districts by County

<http://wa-demchairs.org/districts.php>

Lobbying Your Legislator

HOTLINE: 1-800-562-6000

Messages will be forwarded to appropriate individual.

In Session Hours: 8am – 8pm M – F,

9am – 1pm Saturday

Out-of-Session Hours:

8am – 12pm & 1pm – 4:30pm M – F

- Go to <http://apps.leg.wa.gov/memberemail/Default.aspx> and click on appropriate individual name.
- Personal Letters/Phone Calls:
- Go to <http://apps.leg.wa.gov/rosters/Members.aspx> and click on appropriate individual name for Office address and phone number.

**Washington State Senate
by District**

District	Senator	Party	Phone
1	Rosemary McAuliffe	D	362-786-7600
2	Randi Becker	R	360-786-7602
3	Andy Billig	D	360-786-7604
4	Mike Padden	R	360-786-7606
5	Mark Mullet	D	360-786-7608
6	Michael Baumgartner	R	360-786-7610
7	John Smith	R	360-786-7612
8	Jerome Delvin	R	360-786-7614
9	Mark Schoesler	R	360-786-7620
10	Barbra Bailey	R	360-786-7618
11	Bob Hasegawa	D	360-786-7616
12	Linda Evans Parlette	R	360-786-7622
13	Janea Holmquist Newbry	R	360-786-7624
14	Curtis King	R	360-786-7626
15	Jim Honeyford	R	360-786-7684
16	Mike Hewitt	R	360-786-7630
17	Don Benton	R	360-786-7632
18	Ann Rivers	R	360-786-7634
19	Brian Hatfield	D	360-786-7636
20	John Braun	R	360-786-7638

District	Senator	Party	Phone
21	Paul Shin	D	360-786-7640
22	Karen Fraser	D	360-786-7642
23	Christine Rolfes	D	360-786-7644
24	Jim Hargrove	D	360-786-7646
25	Bruce Dammeier	D	360-786-7648
26	Nathan Schlicher	D	360-786-7650
27	Jeannie Darneille	D	360-786-7652
28	Mike Carrell	R	360-786-7654
29	Steve Conway	D	360-786-7656
30	Tracey Eide	D	360-786-7658
31	Pam Roach	R	360-786-7660
32	Maralyn Chase	D	360-786-7662
33	Karen Keiser	D	360-786-7664
34	Sharon K. Nelson	D	360-786-7667
35	Tim Sheldon (MCC)	D	360-786-7668
36	Jeanne Kohl-Welles	D	360-786-7670
37	Adam Kline	D	360-786-7688
38	Nick Harper	D	360-786-7674
39	Kirk Pearson	R	360-786-7676
40	Kevin Ranker	D	360-786-7678
41	Steve Litzo	R	360-786-7641

District	Senator	Party	Phone
42	Doug Ericksen	R	360-786-7628
43	Ed Murray	D	360-786-7628
44	Steve Hobbs	D	360-786-7686
45	Andy Hill	R	360-786-7672
46	David Frockt	D	360-786-7690
47	Joe Fain	R	360-786-7692
48	Rodney Tom (MCC)	D	360-786-7694
49	Craig Pridemore	D	360-786-7696



WESTERN TIRE CHAIN

Joe L. Rheume
Owner

Toll Free USA **1-888-838-2999**

Fax **1-888-838-2999**

Canada **1-425-389-1362**

www.westerntirechain.com
e-mail: westerntirechain@frontier.com
P.O. Box 3274 • Everett, WA 98213

Washington State House of Representatives by District

District	Representative	Pos. 1	Party	Phone
1	Derek Stanford		D	360-786-7928
2	Gary Alexander		R	360-786-7824
3	Marcus Riccelli		D	360-786-7888
4	Larry Crouse		R	360-786-7820
5	Jay Rodne		R	360-786-7852
6	Kevin Parker		R	360-786-7922
7	Shelly Short		R	360-786-7908
8	Brad Klippert		R	360-786-7882
9	Susan Fagan		R	360-786-7942
10	Norma Smith		R	360-786-7884
11	Zack Hudgins		D	360-786-7956
12	Cary Condotta		R	360-786-7954
13	Judy Warnick		R	360-786-7932

District	Representative	Pos. 1	Party	Phone
14	Norm Johnson		R	360-786-7810
15	Bruce Chandler		R	360-786-7960
16	Maureen Walsh		R	360-786-7836
17	Monica Stonier		D	360-786-7994
18	Brandon Vick		R	360-786-7850
19	Dean Takko		D	360-786-7806
20	Richard DeBolt		R	360-786-7896
21	Mary Helen Roberts		D	360-786-7950
22	Chris Reykdal		D	360-786-7940
23	Sherry Appleton		D	360-786-7934
24	Kevin VanDeWege		D	360-786-7916
25	Dawn Morrell		R	360-786-7948
26	Jan Angel		R	360-786-7964
27	Laurie Jinkins		D	360-786-7930
28	Steve O'Ban		D	360-786-7890
29	David Sawyer		D	360-786-7906
30	Linda Kochmar		R	360-786-7898
31	Cathy Dahlquist		R	360-786-7846
32	Cindy Ryu		D	360-786-7880
33	Tina Orwall		D	360-786-7834

District	Representative Pos. 1	Party	Phone
34	Eileen Cody	D	360-786-7978
35	Kathy Haigh	D	360-786-7966
36	Reuven Carlyle	D	360-786-7814
37	Sharon Tomiko Santos	D	360-786-7944
38	John McCoy	D	360-786-7864
39	Dan Kristiansen	R	360-786-7967
40	Kristine Lytton	D	360-786-7800
41	Marcie Maxwell	D	360-786-7894
42	Jason Overstreet	R	360-786-7980
43	Jamie Pedersen	D	360-786-7826
44	Hans Dunshee	D	360-786-7804
45	Roger Goodman	D	360-786-7878
46	Gerry Pollet	D	360-786-7886
47	Mark Hargrove	R	360-786-7918
48	Ross Hunter	D	360-786-7936
49	Sharon Wylie	D	360-786-7924

District	Representative Pos. 2	Party	Phone
1	Luis Moscoso	D	360-786-7900
2	J.T. Wilcox	R	360-786-7912
3	Timm Ormsby	D	360-786-7946
4	Matthew Shea	R	360-786-7984
5	Chadd Magendanz	R	360-786-7876
6	Jeff Holy	R	360-786-7962
7	Joel Kretz	R	360-786-7988
8	Larry Haler	R	360-786-7986
9	Joe Schmick	R	360-786-7844
10	Dave Hayes	R	360-786-7914
11	Steve Bergquist	D	360-786-7862
12	Brad Hawkins	R	360-786-7832
13	Matt Manweller	R	360-786-7808

District	Representative	Pos. 2	Party	Phone
14	Charles Ross		R	360-786-7856
15	David Taylor		R	360-786-7874
16	Terry Nealey		R	360-786-7828
17	Paul Harris		R	360-786-7976
18	Liz Pike		R	360-786-7812
19	Brian Blake		D	360-786-7870
20	Ed Orcutt		R	360-786-7990
21	Marko Liias		D	360-786-7972
22	Sam Hunt		D	360-786-7992
23	Drew Hansen		D	360-786-7842
24	Steve Tharinger		D	360-786-7904
25	Hans Zeiger		R	360-786-7968
26	Larry Seaquist		D	360-786-7802
27	Jake Fey		D	360-786-7974
28	Tami Green		D	360-786-7958
29	Steve Kirby		D	360-786-7996
30	Roger Freeman		R	360-786-7830
31	Christopher Hurst		D	360-786-7866
32	Ruth Kagi		D	360-786-7910
33	Dave Upthegrove		D	360-786-7868

District	Representative	Pos. 2	Party	Phone
34	Joe Fitzgibbon		D	360-786-7952
35	Drew MacEwen		R	360-786-7902
36	Gael Tarleton		D	360-786-7860
37	Eric Pettigrew		D	360-786-7838
38	Mike Sells		D	360-786-7840
39	Elizabeth Scott		R	360-786-7816
40	Jeff Morris		D	360-786-7970
41	Judy Clibborn		D	360-786-7926
42	Vincent Buys		R	360-786-7854
43	Frank Chopp		D	360-786-7920
44	Mike Hope		R	360-786-7892
45	Larry Springer		D	360-786-7822
46	Jessyn Farrell		D	360-786-7818
47	Pat Sullivan		D	360-786-7858
48	Cyrus Habib		D	360-786-7848
49	Jim Moeller		D	360-786-7872



RCW Chapter 46.55

Towing & Impoundment

TOW TRUCK OPERATORS

REGISTRATION REQUIREMENTS

- 46.55.020 Registration required—penalty
- 46.55.025 Registration or Insurance Required—Penalty
- 46.55.030 Application—Contents, bond, insurance, fee Certificate.
- 46.55.037 Compensation for private impounds
- 46.55.040 Permit Required—inspections of equipment And facilities
- 46.55.050 Classification of Trucks—marking requirements Time and place of inspection—Penalty
- 46.55.063 Fees, schedules, contracts, invoices

IMPOUNDING UNAUTHORIZED VEHICLES

- 46.55.070 Posting requirements—exceptions
- 46.55.075 Law Enforcement impound—required form, Procedures
- 46.55.080 Law Enforcement impound, private impound Master log-Certain associations restricted.
- 46.55.085 Law Enforcement impound—unauthorized Vehicle in right-of-way

- 46.55.090 Storage, return requirements—Personal property
Combination endorsement for tow truck drivers
Viewing impounded vehicle.
- 46.55.100 Impound notice—Abandoned vehicle report—
Owner information, liability—disposition report
- 46.55.105 Responsibility of registered owner
- 46.55.110 Notice to legal and registered owners
- 46.55.113 Removal by police officer—definition
- 46.55.115 State Patrol—appointment of towing operators
Lien for costs—appeal
- 46.55.117 Impounds under RCW 64.44.50

REDEMPTION RIGHTS AND HEARING PROCEDURES

- 46.55.120 Redemption of vehicles—Sale of unredeemed
Property—improper impoundment
- 46.55.130 Notice requirements—public auction—
Accumulation of storage charges
- 46.55.140 Operators lien, deficiency claim, liability

RECORDS, INSPECTIONS, AND ENFORCEMENT

- 46.55.150 Vehicle transaction file
- 46.55.160 Availability of records, equipment and facilities
For audit and inspection
- 46.55.170 Complaints, where forwarded

- 46.55.180 Presiding officer at licensing hearing
- 46.55.190 Rules
- 46.55.200 Penalties for certain acts or omissions
- 46.55.210 Cease and desist order
- 46.55.220 Refusal to issue license, grounds for

JUNK VEHICLE DISPOSITION

- 46.55.230 Junk vehicles—removal, disposal, sale
Penalties, Cleanup restitution payment

LOCAL REGULATION

- 46.55.240 Local Ordinances—Requirements

VEHICLE IMMOBILIZATION

- 46.55.300 Vehicle immobilization

IMPOUNDMENT AFTER ARREST FOR DRIVING UNDER THE INFLUENCE

- 46.55.350 Findings—Intent
- 46.55.360 Impoundment, when required—Law enforcement
Powers, duties and liability immunity
Redemption, when, by whom—Operator liability
Immunity—Definition

MISCELLANEOUS

- 46.55.900 Severability—1985 c377
- 46.55.901 Headings not part of law –1985 c377

- 46.55.902 Effective date—1985 v377
- 46.55.910 Chapter not applicable to certain activities
 Of department of transportation

Notes:

Removal of unattended vehicle from highway: RCW 46.61.590

Riding in towed vehicles: RCW 46.61.625

Safety chains for towing: RCW 46.37.495

WASHINGTON ADMINISTRATIVE CODES

- 204.91A-010 Authority
- 204.91A-020 Purpose
- 204.91A-030 Definitions
- 204.91A-035 Registered tow truck application process
- 204.91A-040 Inspections
- 204.91A-050 Adding or removing drivers or vehicles
- 204.91A-060 Application and qualification for letter
 Of appointment
- 204.91A-070 Issuance of a letter of appointment
- 201-91A-080 Suspension or revocation of letter of
 Appointment
- 201-91A-090 Hearing procedure
- 201-91A-100 Appeal
- 201-91A-110 Complaints
- 201-91A-120 Business Office hours and records

- 204-91A-130 Personal property handling procedures
- 204-91A-140 Fees
- 204-91A-150 Towing procedure
- 204-91A-160 Tow Zones
- 204-91A-170 Minimum Tow truck equipment standards
- 204-91A-180 Additional vehicle towing/operator
Qualifications, restrictions and requirements

<http://apps.leg.wa.gov/rcw/?fuseaction=section>

<http://apps.leg.wa.gov/rcw/default.aspx?cite=46.55>

<http://apps.leg.wa.gov/wac/default.aspx?cite=308-61>

(WAC 308-61 unauthorized and abandoned vehicles)



**WSP COMMERCIAL VEHICLE DIVISION
TOW INSPECTION UNIT**

Lieutenant

Lt. Johnny Alexander
P.O. Box 42614
Olympia, WA 98504-2614
(360) 596-3805
Johnny.alexander@wsp.wa.gov

Statewide Coordinator

Sergeant John Buma
210 11th Ave SW Rm G 21
Olympia WA 98504
(360)596-3804
John.buma@wsp.wa.gov

District 1

Trooper Cindy Hacker
2502 112th St E
Tacoma, WA 98445
(253) 538-3133
Cindy.hacker@wsp.wa.gov

District 2

Trooper Darrin Helton
2803 156th Avenue SE
Bellevue WA 98007
(425) 401-7788
Darin.helton@wsp.wa.gov

District 3

Trooper Chad Bassen
2715 Rudkin Road
Union Gap WA 98903
(509)249-6732
Chad.bassen@wsp.wa.gov

District 4

Trooper Brad Osmonovich
6403 West Rowand Road
Spokane WA 99224-5325
(509)227-6632
Brad.osmonovich@wsp.wa.gov

District 5

Trooper Stan Batt
11018 NE 51st Circle
Vancouver WA 98682
(360)608-8200
Stan.batt@wsp.wa.gov

District 6

Trooper Clint Beler
2822 Euclid Avenue
Wenatchee WA 98801
(509)682-8136
Clint.beler@wsp.wa.gov

District 7

Trooper Javan James
3860 Airport Way
Bellingham WA 98226
(360)676-2007
Javan.james@wsp.wa.gov

District 8

Trooper Joseph Pudlo
4811 Warner Road
Bremerton WA 98312
(360)779-9212
Joseph.pudlo@wsp.wa.gov



TOW PAC is the Political Action Committee of the Washington towing industry organized by tow-ers, and for towers to support candidates for the legislature that understand the issues fac- ing our industry. TOW PAC is

voluntary, non-profit, non-partisan and non-discriminatory and is political and educational in its purpose and programs.

There is a contribution limit in Washington state of \$700 that any one person, business or group can give per election, so raising money is hard work for legislative candidates. Small groups, if they are organized, and if they are committed, can have the same impact as Boeing, Weyerhaeuser or Arco. If only 60 RTTO's across the state contributed just \$25 a month or \$300 a year over the two years between elections, TOW PAC could raise \$36,000 to contribute to key legislators that understand our issues. With that we could contribute the maximum allowable amount to over four dozen legislative candidates!

But is that political clout? The towing industry is effective in lob- bying already, but imagine how we would be viewed in Olym- pia if we contributed at the same level as the Insurance Indus- try, the Automobile Dealers, or even the Asphalt Paving Association! All it takes is your pledge! Every little bit helps. Send your check in now or pledge to contribute an amount regularly and we can automatically charge your credit card each month! Support your industry, support our legislative friends, contribute or pledge to TOW PAC now!

Call the TRAW Office for more information: (509) 782-7170



**Yes, I want to support
TOW PAC!**

I pledge by year -or- by month
(circle one)

\$100/year \$250/year \$500/year
\$20/month \$40/month \$60/month

Name: _____

Address _____

City: _____ State: _____ Zip: _____

Phone (____) _____ Fax (____) _____

State election laws require us to ask the following:

Occupation: _____ Employer: _____

PAYMENT OPTIONS:

Check VISA MasterCard AMEX

(Will be charged monthly on credit card until notified in writing.)

ACCT# _____

Exp Date: _____ V Code: _____ Zip Billing _____

X _____

Cardholder Signature:

X _____

Cardholder Name (Please print):

Fax this page to TOW PAC @ (509) 782-7108

TRAW'S RETRO PROGRAM

TRAW offers members a Group Retrospective Rating Program. The program affords members:

- Potential refunds on your State Industrial Insurance Premiums
- Controlled Workers Compensation Claims Costs
- Better Workplace Safety
- Reduction of Your Own Company's Experience Factor

Retrospective Rating or "RETRO" programs offer employers the ability to get back a portion of their workers compensation premiums. TRAW has a RETRO Plan and rewards employers for maintaining a safe workplace and for controlling workers' compensation costs. The lower the whole group's claims, the higher the refunds!

How Does the Program Work?

The program works as a group so when the group pays premiums that are more than the annual losses, L&I will refund that excess back to the group. Each member of the group will receive a percentage of the refund based on their individual premium costs.

Who Can Participate?

To be eligible, you must meet the following minimum criteria:

- report hours worked in one of the accepted risk classifications
- demonstrate a good safety record
- be current with your L&I premiums
- be a member of TRAW

How Do I Sign Up? Call TRAW Office at **(509) 782-7170**, and we will have a member of our Retro Committee contact you to discuss your company's specific questions

www.towingandrecovery.org.

TOWING & RECOVERY

ASSOCIATION OF WASHINGTON

INDUSTRY PROTECTION FUND



Please check your level of donation

Bronze \$50.00 Silver \$100.00 Gold \$150.00
 Platinum \$250 Diamond \$500.00 Other Amount

Company

Name _____

Address: _____

Contact: _____ Phone: _____

Fax: _____ Email: _____

Donate Check Or Money Order:

Payable to: TRAW with IPF in Memo Line
P.O. Box 281
Cashmere, WA 98815

Donate by Credit Card

Fax to 509-782-7108

We accept (Visa, M/C, American Express) monthly donations
can be made in any amount

Donation Amount _____ one time _____ Monthly _____

Cardholder Name _____ Zip Code: _____

Credit Card Number: _____

Exp. Date: _____

Signature: _____

For additional information about the Industry Protection Fund,
call us toll free at 877-600-8729 (TRAW). The Industry Protec-
tion Fund is earmarked monies to continue to *represent the*
interests of the tow truck industry in governmental and legal
issues.

Support your Towing History



3315 Broad Street
Chattanooga, TN 37408
(423) 267-3132
(423) 267-0867—Fax
e-mail: internationaltowingmuseum@comcast.net
www.internationaltowingmuseum.org

Membership Application

I.T.R.H.F.M. (The International Towing & Recovery Hall of Fame and Museum, Inc.) is a museum and hall of fame that is committed to preserving the heritage and history of the towing industry, and honoring those who have made unselfish and significant contributions to our industry. The museum is known on an International level because it is the only museum of its kind in the world. We welcome, and encourage you to join and participate as a member. The I.T.R.H.F.M. is a non-profit, non-political, non-commercial organization, and has been granted 501-C3 non-profit status by the U.S. Government. EIN #36-3488086.

Name of Company: _____

Years in Towing Industry: _____

Full Name: _____

Spouse's Name: _____

Mailing Address: _____

Street Address: _____

City: _____ State: _____ Zip: _____

Phone:() _____ Fax:() _____

E-mail: _____

____ Operator ____ Vendor ____ Manufacturer ____ Other

Type of Membership (annual)

Corporate Members—please check appropriate category (annual)

____ Silver \$250.00 ____ Gold \$500.00

____ Bronze \$1,000.00 ____ Platinum (Call Museum for Quote)

____ Regular Member \$120.00-6 complimentary tickets to the museum

____ Friend of the Museum (non-voting) \$25.00 per person-2 complimentary tickets to the museum

Date: _____ Check #: _____ Cash: _____

Circle: M/C, Visa, Discover or American Express

Credit Card # _____ Exp. Date: _____

Signature: _____



CHOICEInsurance, LLC
— THE RIGHT CHOICE —

1-800-289-8003



Towing & Recovery Insurance

Salvage | Recycling

- ◆ Auto Liability
- ◆ Property
- ◆ Cargo
- ◆ Equipment Floater

SERVING
TOWING & RECOVERY
ASSOCIATION OF WASHINGTON
Since 2004

Dave Krause
Towing Insurance Specialist
DaveKrause@choiceinsurance.net
www.choiceinsurance.net/tow



Real men drive like
Mothers.

MOTHERS AGAINST DRUNK DRIVING

can always spot real men. They're the guys who consider it a no-brainer to be sober whenever they drive. To offer a ride to friends who've had a few too many. To set a good example for kids. Or to become Mothers themselves by supporting MADD. Because they know that saving lives isn't a woman thing or a man thing. Just the right thing.

Join us at madd.org.



©2011 Mothers Against Drunk Driving

